



NEWSLETTER

PROGRAM EXPANDING AT RIDE TO WALK!!

WE ARE EXPANDING OUR PROGRAM TO OFFER MORE DAYS AND TIMES, SEE INSIDE FOR DETAILS!



Volunteers, Staff and Program Horses



RANGER

RIDER SPOTLIGHT

One Special Rider: Kody Pane

Kody Pane is a wonderful six-year-old boy who has been riding at Ride To Walk (RTW) for the past 3 years. As do many boys his age, Kody enjoys playing with friends, being outdoors, and just having fun. But unlike most others, Kody has been diagnosed with Cerebral Palsy. He has difficulty coordinating and controlling the movement of his body, making mobility, play, and daily living skills challenging for him. Through his therapeutic horseback riding program at RTW, Kody works on increasing the strength of his trunk and extremity muscles, improving his posture, and developing better reach, grasp, and play skills. His favorite riding activities are playing with the puppets, passing the balls back and forth among his helpers, and waving at the other riders. He especially loves to go out on the trail, looking for herons, baby geese, and rabbits. Most of all, Kody works on having a great time and in the process, makes sure that everyone else has fun as well. Kody's parents, Rob and Nikki Pane, are fiercely committed to their son and his wellbeing. Their commitment to RTW has also been tremendous. This year, they organized and hosted the "First Annual Niello VW Ranch Run and Car Show", donating 100% of the proceeds to RTW (see page 5 for more details). They value RTW not only because horseback riding is good for Kody's development, but because it provides a fun, community-based program for him, allowing him to have the same experiences that other kids get through participation in soccer, t-ball, or other team sports. Their contribution to RTW is significant and, in supporting their own child's happiness, they enrich the lives of many others as well. Kody has made great developmental gains in the past 6 months and he will continue to grow stronger through his participation in horseback riding at RTW. As for the staff and volunteers who work with Kody every week, they know that the gift of his happiness and smiling face is their reward.



Niello Employees at RTW BINGO!



Niello Porsche & Land Rover Rocklin Office Manager, Lorraine Thornton, organized Niello employees to support BINGO, RTW's once-a-month fundraiser. We thank the employees from Land Rover, Porsche, Acura, BMW, and the management company for their support of RTW! Winners for the night were Gail Stephens, Gail Quinn, Lorraine Thornton, and Christina Jarvis. BINGO is held the first Friday of every month at the Lincoln Veteran's Hall at 541 5th St. in Lincoln. Doors open at 5:00 p.m. Volunteers needed!



Director's Message

By Kristine Corn, PT, MSPT, DPT

Ride To Walk Family Meeting

There was a wonderful turnout at and support for the recent family meeting. The RTW program goal is to serve our children with special needs; every staff member is committed to reaching this goal. To that end, families must take on some responsibility for the program's financial health.

Board member Steve Quintana reviewed RTW finances to provide a clear understanding of our financial needs and goals. The financial need is further evidence of the need for parent participation in our various fundraisers.

Board member Susie Malloy discussed in greater depth the commitment of the board of directors and RTW staff, making this one of the most valued programs in the area; however, we still need volunteer help from families for one or more of the events in 2008 and next year. If you didn't sign up at the meeting, please see Susan on your ride day and let her know how you can help.

I introduced the changes that will occur in September regarding program development and expansion. We are adding a new program, therapeutic riding, which will be an interim step from hippotherapy, where a therapist creates an individual program for each child and is present during the session. Therapeutic riding will be overseen by Doc Livingston, our North American Riding for the Handicapped Association- (NARHA-) certified instructor, who recently joined our staff. Doc is excited about the program, the children, and the many areas where he can help your child achieve success and rewards as a rider. The independent riding program has expanded its days and hours. We hope to begin our new classes and schedule in early September. All families will receive notice of their new schedule. It was a joy to have so many energetic and interested parents at the meeting. Thanks for such a good turnout and your support.

Executive Director

Kristine Corn, DPT

Board of Directors

Mary King
Keller Williams Realty

Steve Quintana
Parent/Airline Pilot

Susie Malloy
Parent/Attorney

Advisory Council

- Tom Cosgrove, Councilmember,
City of Lincoln
- Gina Garbolino, Mayor,
City of Roseville
- Jim Gray, Councilmember,
City of Roseville
- Jim Joiner, President, Roseville
Joint Union High School District
Board of Trustees
- Tony Monetti, Superintendent,
Roseville Joint Union High
School District
- Alfred "Bud" Nobili, Placer County
Superintendent of Schools
- Kitty O'Neal, News Anchor, KFBK
Clear Channel
- Richard Pierucci, Superintendent,
Roseville City School District
- Robert Weygandt, District 2 Su-
pervisor, Placer County

CAPITAL IMPROVEMENTS

From the desk of the Property Manager, Terry Campbell

The year started off with a bang with a fantastic VW car show and ranch run at our property in April. Thanks to **Tony Turrini** for the donation of almost \$2,000 from his family and friends in honor of his birthday toward the construction of the pavilion. The pavilion is completed and is now available for weddings, reunions, picnics, business retreats, etc. Our thanks go out to **Meek's Lumber, Central Concrete, Teichert Concrete, and Lincoln Sand & Gravel** for their many contributions toward the construction of the pavilion. It was completed ahead of schedule and was a contributing factor in the largest VW car show and ranch run in all of the Western U.S. We are now undertaking a major landscaping project throughout the property courtesy of a donation by **Sheridan Nursery**, saving RTW thousands of dollars. In fall 2008, several trees will be planted throughout the property, again, courtesy of **Sheridan Nursery**. I have also begun researching **solar energy** to reduce our energy consumption. It would be very nice to run our program without the noise of several generators! We are also in the process of building a barn to shelter the wagon we use for our driving program.



RIDE TO WALK

Wish List 2008

- Peacock Stirrups (Safety Stirrups)
- LMF Senior Horse feed
- Draft Halter—red
- Crib Stop
- Adjustable length trailer ties—black or red
- Cross ties—black or red
- U-Guard—Ulcer guard feed through supplement
- Glucosamine and Biotin Supplements
- 52" English girth
- 36" Western Cinch
- Red fly masks—horse and draft size
- Horse cookies
- Black adult size synthetic stirrup leathers
- Rainbow reins
- Red fleece pads
- Video/digital Camera
- Laminator
- Donations for scheduled farrier services
- Recreation Hall/Offices to hold RTW and community events
- Arena railing for top arena.

We will also have a wish list on file with Sierra Feed and Superior Feed Stores in Lincoln if you need help in locating items. Our horses thank you!

We would like to extend a special

"THANK YOU KINDLY"

to Dr. Mark Christin of Gold Country Equine in Rancho Murrieta for donating all of our yearly horse immunizations, great advice and special care for our RTW horses.

Ride To Walk Talk

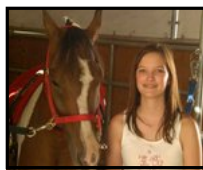
What is your favorite thing about RTW?



Barbara Rocco, Volunteer

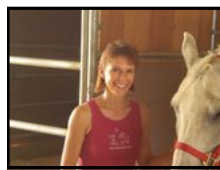
øThe smiles on the kids' faces warm the heart and soul!ø

(and it is obvious to us that she *loves* Thunder, our thoroughbred therapy horse!)



Kate Sullivan, Volunteer

øMy favorite part of RTW is the smiles. Not only from the kids, but from the volunteers too. I can tell the kids love it and the volunteers are there because they want to be!ø not because they have to be; me included!ø



Silvia Otto, Volunteer

øWell, I love to help! I love to work with horses and the RTW staff. I love to work with kids and help them to have a good time. The best part of the day? Earning a smile from one of these children! So, is there any other place in this area you can get all of these things? Not for me! Definitely!ø



Tony Turrini Volunteer

øWhere else can you work with horses, kids and pretty women and not have to pay for it?ø

Thanks to Our Special Donors, Parents and Volunteers who have made 2008 a Success!

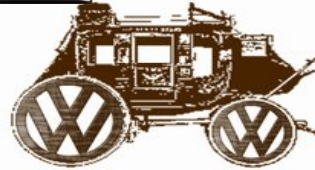
- * Carol Liebert, equipment funding
- * AT&T California and Barbara Winn
- * HP Employees
- * IBM Employees
- * Knights of Columbus
- * Morning Glory Coffee
- * Larry Matevi, entry monument
- * Rainbow Market, Lincoln
- * Sheridan Nursery
- * Southwest Airlines
- * St. Hope Academy and Tom Bratkovich
- * All Boots & Scoots Silent Auction/Raffle Donors
- * Kaanapali Golf Resort
- * Mary King
- * Zurich
- * Michael Weissman
- * Niello Company
- * PASCO
- * Placer County Legal Professionals Association
- * Barbara Rocco, volunteer editor
- * Raley's, Lincoln
- * Soroptimist Club International
- * Catlin Spediacci, VW Car Show donor
- * Woodmen of the World
- * United Way
- * Enterprise Rent A Car—Maria Lawrence RTW Volunteer
- * Sylvia and Volker Otto—HP pc donor and RTW volunteers
- * Varga Family, parents of RTW rider
- * Quintana Family, parents of RTW rider
- * Judy Trent Whitnack, parent of RTW rider
- * Bonney Family, parents of RTW rider
- * Malloy Family, parents of RTW rider
- * Paiz Family, parents of RTW rider
- * Venegas and Stassi Family, parents of RTW rider
- * Dr. Michael and Dawn Chez, parents of RTW rider
- * Halldin Family, parents of RTW rider
- * DeLeon Family, parents of RTW rider
- * Sutcliffe Family, parents of RTW rider
- * Pane Family, parents of RTW rider
- * Mike Sylvia, parent of RTW rider
- * Bedford Family, parents of RTW rider
- * Turrini and Ellis Family, grandparents and parents of RTW rider
- * Don and Soccoro Czapkay, grandparents of RTW rider
- * Miller Family, parents and grandparents of RTW rider
- * Schmidt Family, parents of RTW rider



This year, RTW embarked on a new kind of fundraising event. With the help of Niello Volkswagen, RTW opened its barn doors to hold the 1st Niello Volkswagen Ranch Run and Car Show. The event, open to all Volkswagen models, was held on April 6th and began at Niello Volkswagen with a CHP-led caravan of more than 300 cars to the RTW property in Lincoln, California. Once at the property, the car show participants were greeted by cheering spectators and volunteers to a host of raffle prizes, a 50/50 raffle, and a BBQ. øEyelean and the J Bandø were on hand to entertain the participants as well as a few horses for demo rides. To top it all off, the First- and second-place awards were given to cars that wowed the judges. At the end of the day, RTW had not only nearly 1,000 people on its property, but an impressive \$12,000.00 was raised for the RTW program. It was such an impressive event that we are currently working on getting this caravan of Volkswagens into the øGuinness Book of World Recordsö as the longest VW caravan in the world. A big øthanksö goes out to all the sponsors, volunteers, and Niello employees who helped put this awesome event together. Next year will only be bigger and better, so mark your calendars for April 5th, 2009. We canøt wait to see you there!!



Classic VWs



Reward: \$500

Got a **HANKERIN'** for design? Want some extra **DINERO**? Well, **COWBOY UP** and design the next Niello Volkswagen Ranch Run T-Shirt! The winning design will be awarded **\$500** and will be sold to the public during Niello VW's Second Annual **RANCH RUN** benefiting Ride to Walk. The winning design will also be featured on posters, flyers, and a **HEAP** of other promotional materials. You must **PONY EXPRESS** your entries to Niello VW by November 30th or you can email jpegs to rpane@niello.com. **FETCH** the full list of rules at by going to www.vw.niello.com.



niello.com

Save the date and plan to join us April 5, 2009!

Entries will be the property of the Niello Company. All designs must be original artwork. No horse thieves.

Our condolences to the family of Matthew Jbeily. All of us miss you, Matthew!

To learn more about Angelman's Syndrome, please go to <http://www.angelman.org/angel/>

New Deputy at the Ranch...

Introducing Keith Karthuasser, Caretaker

Keith comes to us from Lincoln where he lives with his girlfriend, Nicole, and daughter, Myah. Keith works full time at RTW taking care of the property and horses under the supervision of Terry Campbell. Keith is a local and grew up in Lincoln. We appreciate Keith's hard work and great attitude.

Welcome to the Ranch Keith!!



VW Ranch Run in front of RTW Property

From the Barn....

By Sandy Smyth, Barn Manager

2008 has been a record year for new horses and horse-related activities for RTW. Now, instead of a silence of a few hard-working old horses to greet us, we have eight sets of bright eyes and perked-up ears, and lots of whinnying for attention. Our horses now range from 13 to 18 hands tall. We have fast-gaited horses, slow-gaited horses, narrow horses, and wide horses. Finally, our horses now can not only be ridden, but can be driven as well!

As RTW grows and strives to take our children farther, all of these new equines are a blessing to our barn. When an independent rider gives the right cue to his or her horse and the well-trained mount responds, the rider receives positive feedback that will reinforce his or her knowledge (that way the rider knows that we, as their instructors, really know what we are talking about!). When a child with low tone gets on a horse with lots of movement, his or her muscles are developing without the child even knowing. When a kid with CP rides a horse that is narrow, he or she won't be so sore after straddling it because the rider won't have to try to spread the tight leg muscles so wide. For the future, we will already have our horses trained to drive a cart or wagon to expand service to children that are unable to ride on the horse's back. That is a glimpse of the beauty of RTW's team of awesome horses!

As RTW expands, we will need to have as many horses as possible to share the workload. Having strong, able-bodied horses will enable all of them to have an even load and no horse will be over worked. We still have two spots to fill and are tirelessly looking for the perfect horse or pony to fill those spots. We also are considering getting a miniature horse for grooming activities. Finding these equines is a tedious job when you have to consider height, speed of gait, temperament, age, health concerns, and finding the owner who will donate that perfect horse to boot!

Overall, RTW has come a long way with its horses, in keeping the best of the 2007 horses and bringing in new horses for 2008, we are working toward developing a quality group of horses that will give the best therapy for the children, work well for the volunteers, and be strong enough to handle an expanding workload.



Sandy Smyth



Star

National Show Horse



There's a new Sheriff in Town....

Introducing Doc Livingston

Howdy,! My name is Doc Livingston. It is a privilege and an honor to be a part of the RTW riding program. I want to thank RTW for giving me this opportunity to serve the riding center, parents, and the children. I am soooo excited about being able to share in the growth and healing of these children—to be able to give them an opportunity to be all that they can be. I have been involved with children with disabilities since 1988, and have had horses in my life since I was about a year old. I am a NARHA-certified instructor and have volunteered or taught at several riding centers here in northern California. NARHA sets the standard for quality and safety in “therapeutic riding”, and this is the level of teaching that I want to bring to all of the children I am involved with here at RTW. I believe the most important thing (other than safety) is to have FUN!!!! And more FUN! FUN, FUN, FUN! So let the smiles begin!

Ride To Walk
P.O. Box 1354
1630 Hwy 193
Lincoln, CA 95648



Ride To Walk

Phone: 916-434-0693 Fax: 916-434-8129
E-mail: ridetowalk@sbcglobal.net



Thank you to our WONDERFUL Volunteers!!!

RTW could not exist without your dedication! Please consider volunteering your time at Ride To Walk!

Gail Austin	Terrie Dorfman	Maria Lawrence	Silvia Otto
Marcia Barthel	Stacy Eberhart	Marissa Lee-Lutz	Raquel Patocs-Tercero
Jackie Beyer	Sally Ellis	Emili Lewis	Rosie Perrot
Elizabeth Blake	Dick Elms	Kaiti Lewis	Jenny Rivers
Esther Blake	Ron Felsenstein	Ann Miler	Barbara Rocco
Hannah Blake	Jeri Ferris	Bob Miller	Shyrlyn Schutt
John Blake	Karen Freeman	Dick Miller	Donna Sosko
Mary Blake	Arielle Ganem-Rosen	Ken Miller	Kate Sullivan
Sarah Blake	Dick Hansen	Marilyn Miller	Elizabeth Torrez
Nancy Bumpus	Marilyn Hansen	Mary Molvig	Tony Turrini
Spencer Burns	Stephanie Harada	Pat Monda	Sheree Utterback
Frankie Campagna	Kirsten Hill	Brigit Moore	Jen Van Horn
Gina Campagna	Ern Hargis	Lynda Newberry	Jessica Whardo
Tony Campagna	Arlene Jewett	Janie Norton	Anne Wustefeld
Katie D'Addio	Kama Kirby	Lauren Novak	Barbara Zorich
Dorothy Dimick	Liz Krauss	Adrianna Novi	